



# Forest & Bird

TE REO O TE TAIAO | *Giving Nature a Voice*

## MANAWATŪ BRANCH

### FEBRUARY, 2018 NEWSLETTER

#### In this Issue :

- F&B Manawatū February MonthlyTalk
- F&B 2017 North Island Gathering
- Situations Vacant
- Working Parties
- F&B December2017 Monthly Talk

### F&B FEBRUARY 2018 MONTHLY MEETING

**TUESDAY 13<sup>th</sup> FEBRUARY, 2018 @ 7.30 p.m.**

**CHANGE OF VENUE: Palmerston North City Library  
George Street Entrance**

#### Talk: "What is a wetland?"



Photo: Lake Pauri, a small wetland near Waitotara, which is full of plants filtering water and locking up nutrients and other chemicals

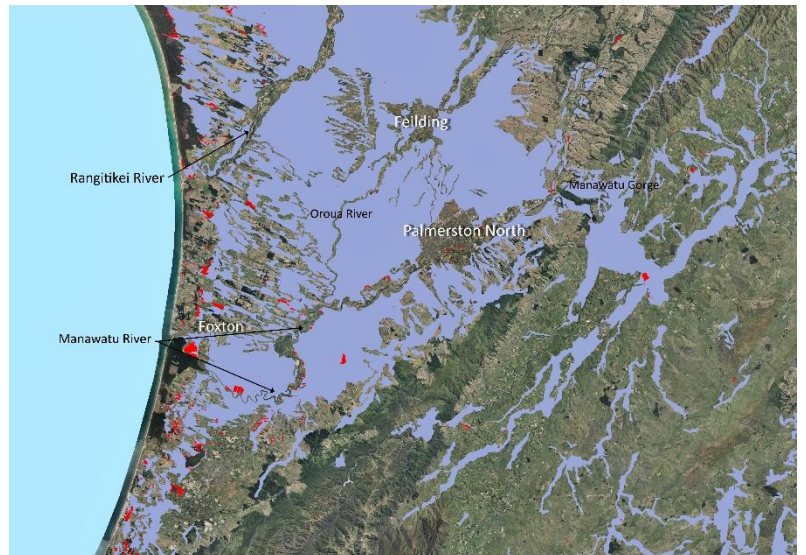


Image Provide by Peter Newsome, Landcare Research  
Mauve area: Historic wetlands Red Dots: Present day Wetlands

#### Speaker: Jill Rapson, Ecology, Massey University

Jill will introduce us to wetlands (yes, they do have "fresh" water in them!). Then, she will take us on a quick tour of the types of wetlands both in NZ and internationally (mainly from a vegetational point of view).

She will show you a few of her favourite weird wetlands from around the world, and comment on the status of wetlands and their conservation in the Manawatu region.

All welcome. Gold coin donation appreciated

---

The article below was written by Jill Rapson and should have been printed in the Tribune this week

### **How are our kidneys?**

There is an old saying that "wetlands are the kidneys of the planet". One would hope our wetlands were able to supply our drinking water, store our flood water, clean up our waste water, and return water to us fit for (re-)consumption.

Wetlands are also important habitat for a huge range species, notably birds like bitterns and crakes, but also fish, invertebrates, plants, and many organisms too small to see. All play a part in keeping our wetlands functioning well.

But in the Manawatu the extremely rare longfin eel is fast losing its habitable wetlands due to dairy effluent. And swards of neinei or *Carex secta* are a thing of the past, allergic to pollutants such as hydrocarbons washed off roads.

In fact, we hardly have any wetlands left- only 3% in terms of their original surface area. Most have been logged (if forested) and drained for agricultural reasons. Only tiny pockets remain, and these are mostly disturbed, and affected by drainage, weeds, and pests. Struggling to survive, their ability to supply the "ecosystem services" we take for granted is declining. Nor can we afford to actually pay the billions of dollars it would cost to use technology to do what wetlands do for free.-So, we need to look after our wetlands (AKA kidneys) for everyone's health.

Wetlands are best looked after by fencing them from wandering stock, planting a buffer of trees and shrubs around them, restoring lost aquatic macrophytes (plants of wet zones such as raupo and flax), and leaving the water clean and undisturbed to provide natural habitats and services to all organisms, including us.

Of course, individual wetlands do not last for ever, as they gradually terrestrialise. So, maybe it is time to look at re-wetting and re-wilding some of our more low-lying and swampy lands for our future well-being!

---

## F&B MANAWATŪ MONTHLY MEETING PROGRAMME

MARCH – JUNE, 2018

SEA WEEK – Saturday 3<sup>rd</sup> to Sunday 11<sup>th</sup> March 2018.

“Toiora te Moana – Toiora te Tangata – Healthy Seas, Healthy People”

**Tue 13 Mar "Little Penguins (Kororā) -- The Living Taonga of the Kāpiti Coast"**

**Speaker:** Ken New, Places for Penguins project

**Tue 10 Apr "Turitea Reserve - Palmerston North's Biodiversity Reservoir: Achievements in predator control and ecosystem recovery"**

**Speaker:** Peter Handford, GroundTruth

**Tue 8 May "The little things in our wetlands: a forgotten fauna in a forgotten habitat"**

**Speaker:** Professor Russell Death, Freshwater Ecology, Massey University

**Tue 12 Jun "Wetlands birds of New Zealand"**

**Speaker:** Dr Phil Battley, Wildlife & Ecology Group, Massey University

**Branch Night Meetings:** 7.30 p.m.

PN City Library, George Street entrance, Palmerston North  
(visitors welcome)

---

## WORKING PARTIES

### Apollo Butterfly Park

**2nd Sunday of each month**

Love seeing monarch butterflies flitting around Palmy? Help keep the Apollo Butterfly Park looking beautiful, and the butterflies happy.

### Ahimate Reserve Formerly Waitoetoe Park

**Sunday 25 February**

**Last Sunday of each month**

Planting. All Welcome, any time between 10am and midday. Meet at the sandwich board at 10, or look for the balloons in the park, along the riverside track.

### Foxton Beach Cleanup - Seaweed 2018

· Hosted by [Sea Week](#) and [Horizons Regional Council](#)

**Saturday 3 March 10:30am**

Foxton Beach has endangered coastal landscapes and an abundance of seabirds. However, it's a coastline that collects a lot of river and marine debris. This Beach Cleanup finishes with a free BBQ at 12:30pm. Wear appropriate clothing, BYO gloves. Rubbish bags provided. <https://www.facebook.com/events/186615638600030>

## CONSULTATIONS

### Freshwater Invertebrates

#### **New assessment of the threatened status of New Zealand freshwater invertebrates**

DOC seeks submissions about any changes in status of New Zealand freshwater invertebrates. **Submissions close 28 February 2018.**

<http://www.doc.govt.nz/get-involved/have-your-say/all-consultations/2017/new-assessment-of-the-threatened-status-of-new-zealand-freshwater-invertebrates/>

---

### Have your say on Molesworth Station

The iconic landscape of Molesworth station, with its dry mountains, empty skies, and vast river valleys, is home to NZ's largest working farm. But its lease is set to expire, prompting a rethink of how the land is used. Forest & Bird is advocating for parts of the station, if not all of it, to be set aside primarily for conservation and recreation

Have your say on the current and future management of Molesworth Station through an online survey. **Survey closes 14 April 2018.**

This consultation is a requirement of the 2013 Molesworth management plan, which recognised that many people were interested in wider access and recreation opportunities at Molesworth. It's important for us to get an idea of how people regard Molesworth and its many values today.

<http://www.doc.govt.nz/get-involved/have-your-say/all-consultations/2017/the-future-of-molesworth-station/>

---

If you are interested in Advocacy, below are some websites you might want to check occasionally:

<http://www.doc.govt.nz/get-involved/have-your-say/open-for-your-comment/>

<https://www.pncc.govt.nz/yourcouncil/consultations/>

[http://www.mdc.govt.nz/Your\\_Council/Consultation](http://www.mdc.govt.nz/Your_Council/Consultation)

<http://www.horizons.govt.nz/publications-feedback>

---

### F&B Media Roundup

- [Land of opportunity? Future of iconic high-country station put to NZ public](#) (TVNZ, 6/2/18 featuring Debs Martin)
- [Annabeth Cohen, Time to modernise our farming systems](#) (op ed in Hawke's Bay Today, 6/2/18)
- [Kiwis urged to plant rātā seeds to save trees](#) (Newshub, 4/2/18, featuring Dean Baigent-Mercer)
- [Dramatic maps released showing state of crisis in nation's wetlands](#) (Stuff, 1/2/18, featuring Annabeth Cohen)
- [Thousands snubbing Waitakere ranges rāhui despite reminders by park rangers](#) (NZ Herald, 21/1/18, featuring Rebecca Stirnemann)
- [Fisheries Minister pours cold water on bycatch video suppression](#) (Newshub, 18/1/18, featuring Kevin Hague)



## Whanganui Nature talks

Beginning in 2018, three local environmental organisations—the *Whanganui Museum Botanical Group*, the *Whanganui branch of Forest & Bird*, and *Birds New Zealand (Whanganui Region)*—in conjunction with the Whanganui Regional Museum itself, will be offering a programme of monthly talks on topics related to New Zealand's environment and natural history, and their conservation. The talks, under the general heading of *Nature Talks*, will be held on the third Tuesday of each month

**Date: Thursday 15th February 2018**

**Time: 7.30pm Entrance is Free**

**Where:** Davies Lecture Theatre, Whanganui Regional Museum (Watt Street entrance)

**Speaker:** Tom Kay, F&B Lower North Island Manager

Tom has recently worked on projects in the Marlborough Sounds and Northern Mount Taranaki under the Zero Invasive Predators initiative and will speak about his experiences and hopes for the future.

---

## ROYAL SOCIETY MANAWATŪ BRANCH

**Tuesday, 20 February, 2018**

**TIME:** 7.30 pm

**WHERE:** Palmerston North Central Library, George Street entrance, Palmerston North

**TOPIC: "TB Control and Pest Management"**

**SPEAKER:** Kevin Crews OSPRI New Zealand

New Zealand has had a long history of *Mycobacterium bovis* (TB) infection in cattle, and latterly deer, herds. This has been largely driven by wild animal infection, primarily possums, an introduced pest into New Zealand which is also responsible for extensive flora and fauna damage. New Zealand has been able to control its bovine TB problem through the targeted control of these infected wild animal populations and at the same time achieve significant collateral benefit to flora and fauna protection.

Kevin Crews is a Massey University veterinary graduate, who works as Head of Programme (Disease Management) for OSPRI New Zealand Limited, the company which manages New Zealand's bovine tuberculosis control strategy and National Identification and Traceability programme.

*All warmly welcome*

---

**TALK: It's Our Future Manawatu Climate Change Talk**

**DATE: Tuesday 20 February, 2018**

**TIME:** 6.30 – 9.00 p.m.

**WHERE:** Globe Theatre, Main Street, (cnr Pitt & Main Street) Palmerston North

**SPEAKER:** Catherine Cheung of Climate Justice Taranaki & Sarah Roberts of Taranaki Energy Watch

January 2018 was the hottest month on record in New Zealand. Does this worry you? What can be done about Climate Change?

Come and listen to the Speakers discuss 'The Drivers and Victims of the NZ Fossil Fuel Industry' in their audio/visual presentation, followed by questions.

ENTRY: Gold coin donation appreciated

---

### **Whanganui Science Forum February 2018 talk**

**Time:** Tuesday, February 27th, 2018 7.30pm

**Venue:** Whanganui Regional Museum's Davis Lecture Theatre, access from Watt St

**Cost:** Members \$4.00, non-members \$5.00

Supper provided.

**Speaker:** Vince Neall, Emeritus Professor at Massey

Vince will take our minds off climate change and give us something else to worry about: volcanism and Mount Ruapehu. He has a special interest in infrastructure vulnerability to volcanic events. What will the ash do to us? What if a lahar comes down the river?

---

### **Pacific Climate Change**

**21-23 February 2018, Wellington**

Climate change is already altering the weather and raising sea levels across the globe, presenting huge risks for food security, water availability, and habitability. Nowhere is climate change, and ocean change, a more urgent issue than across the Pacific, home to many low-lying island nations. This conference will bring together a broad range of voices, from the science to the policy and public implications.

For more information go to the [website](#) or [Facebook page](#).

---

### **OTHER ITEMS OF INTEREST**

**REEL EARTH FILM FESTIVAL: [Short Film Competition](#) Closes 19 March, 2018**

Filmmaking talent in the Manawatu is about to be showcased again, in the [Reel Earth Short Film Competition](#). The 2017 entries were outstanding, and [PNCET](#) is excited to host the comp again in 2018. This is part of the thirteenth [Reel Earth Film Festival](#), which aims to engage, entertain and inspire people on environmental topics through the powerful art of film.

---

### **ENVIROMENTAL/CONSERVATION DATES**

#### **February**

[World Wetlands Day](#) – Friday, 2 February 2018

[International Polar Bear Day](#) – Tuesday, 27 February 2018

Every year, this global event draws attention to the challenges polar bears face in a warming Arctic—and how we each can help.

<https://polarbearsinternational.org/get-involved/international-polar-bear-day>

## March

### **World Wildlife Day - 3 March, 2018**

[World Wildlife Day](#) is a global celebration of wildlife and the Convention on International Trade in Endangered Species of Wild Fauna and Flora (CITES).

### **Seaweek**

3 – 11 March 2018

[Seaweek](#) is a national celebration of our marine environment.

---

## **F&B MANAWATŪ MARCH, 2018 MONTHLY MEETING**

**Tuesday 13<sup>th</sup> March, 2018 @ 7.30 p.m.**

**Palmerston North City Library, George Street Entrance, Palmerston North**



Photo: Craig McKenzie

**"Little Penguins (Kororā) -- The Living Taonga of the Kāpiti Coast"**

**Speaker:** Ken New, Places for Penguins project

That's all for now – hope to see you at one of our Monthly Meetings

*Anthea*

**Anthea McClelland**

Chair, Forest and Bird Manawatū Branch

[Manawatu.Branch@forestandbird.org.nz](mailto:Manawatu.Branch@forestandbird.org.nz)



**Forest & Bird**

TE REO O TE TAIAO | Giving Nature a Voice