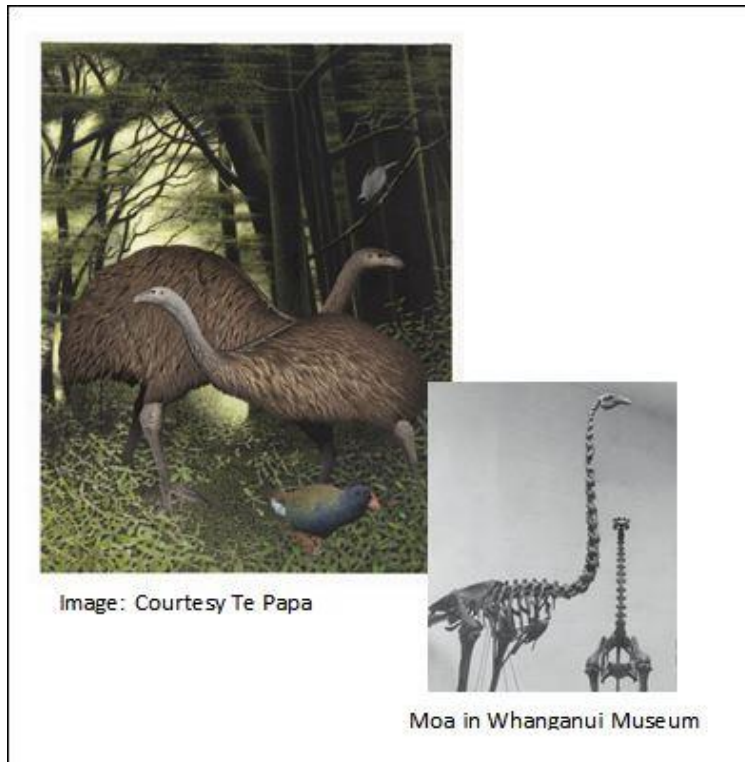


MANAWATU BRANCH

MANAWATU BRANCH MONTHLY TALK
TUESDAY, 12th JULY, 2016

Talk: “Mighty Moa of the Manawatū”



SPEAKER: Dr Mike Dickison

Curator of Natural History, Whanganui Regional Museum

It sounds "a bit Jurassic Park", but Trevor Mallard said scientists had been making progress on techniques for using recovered DNA from extinct animals to reconstruct new life.

He suggested that moa could be roaming around New Zealand again in 50-100 years.

Is that really possible?

What would we need to do if we wanted to resurrect moa, and should we?

All welcome. Gold coin donation appreciated

If you would like to stay in touch, please sign up to our Mailing list on our website: www.naturesvoicemanawatu.org.nz

For more information about Forest & Bird go to:
www.forestandbird.org.nz

F&B JULY 2016 TRIP

PAENGAROA SCENIC RESERVE, MATAROA, near Taihape

Saturday 16th July, 2016



Leader: Vivienne McGlynn, Forest & Bird Member

Moa ate Divaricating plants, but what are they?

Join us on a divaricating trip to a gem of a forest remnant in the heart of the Rangitikei, Paengaroa Scenic Reserve, where divaricating plants rule. What is a divaricating plant? Come to the talk (on 12th July), then do the walk.

We'll be kindly hosted by a guardian of Paengaroa Michael Hutchins, who lives nearby and who has offered his house for our lunch stop, complete with a commanding view of Ruapehu, and a guided tour around his sustainable lifestyle.

N.B. Paengaroa Reserve is a special place for plants. It has a remarkable concentration of rare species and the greatest concentration of divaricating plants for any similar sized area in New Zealand making it a botanical treasure trove.

Depart: 08.30 a.m. sharp from Palmerston North
or 10.15 a.m. sharp at Taihape public toilets

Meet: Palmerston North - Car pool - meet on Church St, opposite
Centrepoint Theatre & Salvation Army Shop (on Railway land side).
If you carpool, please share petrol costs with the driver.

OR: Taihape: meet at the public toilets by 10.00 a.m (Please contact Julia if you
want to meet at Taihape)

What to bring: Please bring lunch, water, raincoat/warm clothes, stout footwear and
walking poles if you usually use them - and do not forget your camera.

For more information: Contact Julia Panfylova Email: J.Panfylova@gmail.com
Phone: 021 050 5741