



F&B Manawatū Branch Annual General Meeting

Tuesday 9th April, 2019 @ 7.15 p.m.

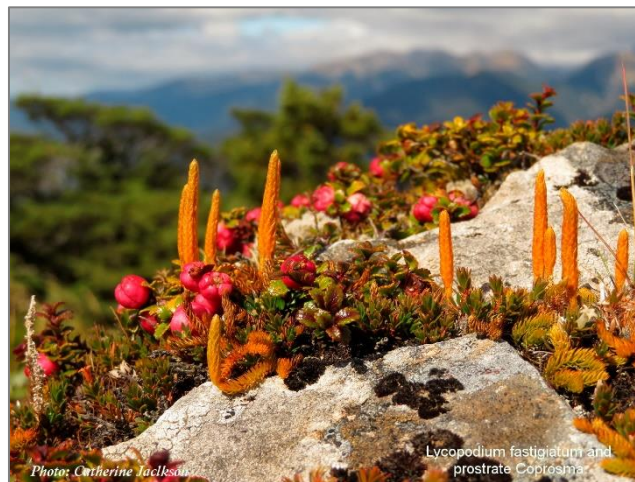
following immediately after with

April 2019 Monthly talk

Palmerston North City Library,
George Street Entrance, Palmerston North

Talk: “Alpine plants in the Lower N.Island Ranges”

Speaker: Catherine Jackson



Have you ever wondered what the small/minute flowering plants you see on a walk/tramp on the top of the hills?

Catherine will talk about the definition of “alpine” and individual named alpine ecosystems, a method of identifying 70 common plants within each alpine ecosystem, starting by "growth form" then expanding to snappy word-pictures of each species, with colour photographs of examples from local tramps.

All Welcome – gold coin donation appreciated

F&B MANAWATŪ APRIL 2019 MONTHLY TRIP

Saturday 13th April, 2019

Pettifar & Gilchrist Loop Tracks in the Pohangina Valley



The Pettifar and Gilchrist Loop Tracks in the Totara Reserve will lead you down a series of terraces towards the Pohangina River. You will pass through this ancient forest - kahikatea dominated forest in the wetter areas, and totara dominated forest in drier areas. Both Tracks make use of the Old Coach Road, a section of the original horse and cart track along the Pohangina Valley. An abandoned tree nursery on the Gilchrist Loop Track was the source of most of the large poplars now visible throughout the Pohangina Valley. The birdlife is abundant throughout the area so keep your eye out for birds such as the Tui, Fantail, Bellbird and Kereru.

Depart: Palmerston North at 09.00 a.m. (Sharp)

Leaders: Jorinna Prinz

Meet: Palmerston North: Car pool – meet on Church St, opposite Centrepoint Theatre & Salvation Army Shop (on Railway land side).

If you carpool, please share petrol costs with the driver

Fitness Level: Easy/moderate (most of the trip will be in the sand dunes)

What to bring: Please bring snacks, lunch, water, raincoat and stout footwear and walking poles if you usually use them – and do not forget your camera.

For more info & Register: Contact Jorinna Prinz –

Email: Manawatu.Branch@forestandbird.org.nz

OTHER ITEMS OF INTEREST

WORKING PARTIES

Apollo Butterfly Park

Sunday 14 April

2nd Sunday of each month

Love seeing monarch butterflies flitting around Palmy? Come to this working bee, help keep the Apollo Butterfly Park looking beautiful, and the butterflies happy. Stay for a cuppa afterwards.

Edwards Pit Park

Sunday 21 April

3rd Sunday of each month

Come and help the Pit Park People planting and maintaining native vegetation in this historic quarry, which is now a lush urban park visited by native birds. All welcome, stay for a cuppa afterwards.

Plastic Pollution Challenge

Plastic pollution is an urgent global issue. Manawatu River Source to Sea (an entity of ENM) is working together with Massey University's Zero Waste Academy on this project that aims to collect data from 40 randomly selected sample sites on streams running through Palmerston North, to get a better idea of the overall size of the plastic pollution issue in the city.

Another 5 sites are still hoping to find a sampling team. If you are keen to share this experience and help find out just how much plastic is accumulating in our urban streams, now is the time to sign up. You can find out more and register for a public event, or book a group outing [on our web page](#). To see a presentation on the why, what and how, [click here](#).

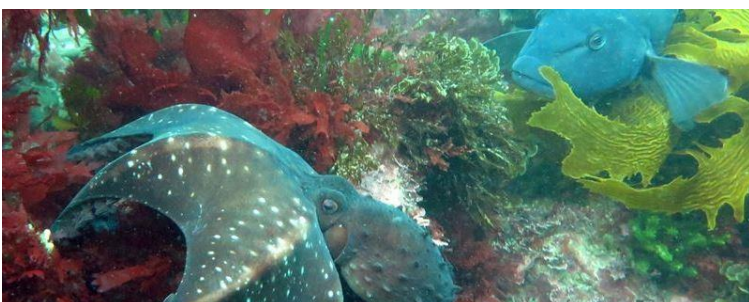
And if sampling is not your passion, come and join us for the sorting and counting at Te Manawa between 15 and 28 April. See the [ENM calendar](#) for drop-in times.

Reducing Household Rubbish

Square Edge, Sunday 14 April 3-5pm

Join Hannah and Liam, the Two No-Waste Nomads behind The Rubbish Trip, for an introduction to the practicalities and philosophy of waste reduction. Drawing on their own research and over four years of experience living zero waste, Hannah and Liam will guide you through the whys and the hows of life without a rubbish bin. This event is free; everyone is welcome. Free zero waste nibbles, tea and coffee will be provided. BYO reusable, non-disposable cup!

Is Wellington home to a new biodiversity hotspot?



https://www.doc.govt.nz/news/media-releases/2019/wellington-home-to-new-biodiversity-hotspot/?utm_medium=email&utm_campaign=Whats%20up%20DOC%20March%202019&utm_content=Whats%20up%20DOC%20March%202019+CID_610be435d06011f9c06b4a21355ae51a&utm_source=Email%20newsletters&utm_term=Underwater%20scene

Citizen scientists have recorded nearly 2,000 observations at Wellington's [Taputeranga Marine Reserve](#). That's more recordings than in New Zealand's most internationally famous dive destination, the Poor Knights Islands Marine Reserve. [Read more about some of the discoveries](#)

Tiny seabirds transferred 800 km from the Chathams



50 white-faced storm petrels chicks from the Chatham Islands have been translocated to predator-free Mana Island.

It's the start of a [3 year project by Friends of Mana Island to start a new colony](#)

F&B Manawatū May 2019 Monthly talk

Tuesday 14th May, 2019

Palmerston North City Library,
George Street Entrance, Palmerston North

Talk: "Restoring balance using biological control".

Speaker: Craig Davey, Horizons Environment Programme Coordinator, Biosecurity in Plants



Craig will talk about Horizons Regional Council, on behalf of the National Biocontrol Collective, successful in its bid to be the first organisation in the world to use a mite for biological control against the invasive weed old man's beard.

The gall mite *Aceria vitalbae* has been cleared by the Environmental Protection Authority (EPA) to be imported and distributed within New Zealand. The import will mark a world first for a country

attempting to control old man's beard by introducing an insect from its northern hemisphere home range.

He will also talk about other biological controls used by Horizons.

That's all for now – hope to see you at one of our Monthly Meetings

Anthea

Anthea McClelland

Forest and Bird Manawatū Branch

Manawatu.Branch@forestandbird.org.nz

