

[View this email in your browser](#)



FEBRUARY 2024

FEBRUARY 2024 NEWSLETTER

February 2024 Monthly talk

Tuesday 13th February @ 7.30 p.m.

PN City Library, George Street Entrance, Palmerston North

(This meeting will be on-line via zoom – see the link below)

Talk: Manawātū coast under climate change & their impacts on native vegetation

Speaker: Jill Rapson, Research Associate, School of Natural Sciences, Massey



Jill will talk about her theories on the future of the Manawatu coast and its major habitats, in the face of global warming and projected future sea levels. Using a mix of scenic illustrations and data from research studies, she will discuss the potential future of dune, wetland and estuarine vegetation. The coast could be very different in the future, and management needs to consider its long-term options.

All welcome. Gold coin donation appreciated

Forest & Bird Manawatu Branch invites you to a scheduled Zoom meeting.

Topic: F&B Manawatu Branch Talk - "Manawātū coast under climate change & their impacts on native vegetation"

Time: 07:30 pm

Join Zoom Meeting

<https://forestandbird-org-nz.zoom.us/j/88343664930?pwd=zDx4FOhQTztAlkcelOfbg9tA00JqsO.1>

Meeting ID: 883 4366 4930

Passcode: 181483

One tap mobile

+6436590603,,88343664930# New Zealand

+6448860026,,88343664930# New Zealand

F&B MANAWATŪ FEBRUARY TO JUNE 2023 MONTHLY TALK PROGRAMME

Tues 13th February: Jill Rapson –

Talk: “Manawatū coast under climate change, and their impacts on native vegetation”

Speaker: Jill Rapson, Research Associate, School of Natural Sciences, Massey University

Tues 12th March:– Speargrasses & their associated invertebrates

Talk: Speargrasses & their associated invertebrates

Speakers: Lara Shepherd & Leon Perrie, Botany, Te Papa, Wellington

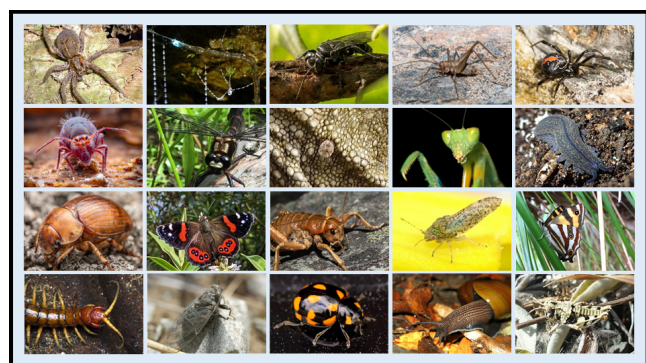
Tues 9th April: Annual General Meeting followed by: -

Talk: “Wellington’s marine environment - marine conservation successes and current pressures”

Speaker: Dr Nicole Miller, Chair of the Friends of Taputeranga Marine Reserve Charitable Trust

May and June monthly talks are still being arranged

The Bug of the Year competition is back for the second year running



The hunt is on for the NZ Bug of the year for 2024

This is the 2nd year of the competition has been run by the Entomological Society of New Zealand, which aims to raise the profile of some of Aotearoa’s smaller, more forgotten species.

This year 20 bugs are vying for the top spot, including the venomous katipō spider, a species of tick found only on tuatara and a many legged giant spider

Voting closes on 12th February

To vote go to <https://bugoftheyear.ento.org.nz/2024-bug-of-the-year-nominees/>

Manawatu Walking Festival



The 2024 Manawatu Walking Festival will take you throughout the city, along our coastlines, across mountain ranges, through our urban arts scene and through Te Apiti – Manawatu Gorge. Pick and choose from the selection of guided walks that are hosted throughout the three-day festival from 1st - 3rd March 2024.

Hosting this year's festival is a range of experts from experienced tramping guides, historians, conservationists, story-tellers and photographers. There are walks for all ages and fitness levels, with plenty of options to choose from including some popular favorites from previous years for 2024.

F&B Manawatū will be guiding two walks during the festival –

Saturday 2nd March – the Tawa Loop Track

Sunday 3rd March - Te Apiti – Manawatu Gorge Walk (full length Gorge Track)

Bookings are essential as limited spaces available.

For tickets and information on walk durations, start times, transport and space available, please visit each walk's listing on Eventfinda or the website for more information.

KIWI CONSERVATION CLUB (KCC) NEWS



KCC MANAWATŪ JANUARY 2024 TRIP TO TOTARA RESERVE REPORT



"In January KCC Manawatū headed to Totara Reserve Camp Ground near the Ruahine Ranges

for an overnight camping experience. And what an experience it was! Despite the thunderstorms putting a dampener on having a campfire and roasting marshmallows, we set up tracking tunnels in the bush, identified leaves from different plants, explored invertebrates in the river, went bird watching, made bird masks, explored the bush at night and wove flax flowers. The rain meant we did not get a lot of critters visiting our tracking tunnels, but two of tunnels were visited by pesky possums who tore the weet-bix boxes apart to get to the peanut butter inside."

Anna Regtien , KCC Manawatū Coordinator

KCC Manawatū needs your help. Anna would like someone to help her with arranging the KCC activities. If you are interested, please email Anna at Manawatu@kcc.org.nz

Upcoming events for KCC Manawatu - Term 1

Sunday 25th February - KCC Beach Clean-up Day at Himatangi Beach

Sunday 17th March - trip to Tarapuruhi (Bushy Park)

NOTE: Anna tries to organise 2 KCC adventures per term and one in the school holidays.

Event by [The Flow Collective](#), [Bushy Park Tarapuruhi](#)

[Tickets www.undertheradar.co.nz/gig/88236/Songbird.utr](http://www.undertheradar.co.nz/gig/88236/Songbird.utr)



Join musicians Elise Goodge, Hamish Jellyman and Elizabeth de Vegt for a magical bird themed afternoon at Bushy Park. 2pm

Soundwalk and meditation in the garden (optional), 3pm afternoon tea (tea and scones, included in ticket price),

3.30pm concert in the homestead featuring original and cover songs about birds.

The perfect way to end La Fiesta 2024.

Venue Address: Bushy Park Sanctuary, Tarapuruhi, 791 Rangitatau East Road, Kai Iwi 4578

Cost per person: \$25 adults, \$20 Seniors, \$50 Family pass (2 adults, 2 kids).

Please note the park opens at 10am in the morning, feel free to arrive when you would like to. We will meet outside the homestead at 2pm for the Soundwalk.

Regular Working Bees

Get your hands dirty!

Feb 11, 25 [Dune Gardens, Foxton.](#)

Feb 11, 25 [A Rocha Nursery](#)

Growing natives from eco-sourced seed.

Feb 11 [Apollo Butterfly Park](#)

Planting for Monarch butterflies, etc..

Feb 18 [Pit Park Roslyn](#)

A restored urban native bush habitat.

Most Sundays [Manawātū Estuary Trust](#)

Keeping exotic species out of the wetland

February is Whio Awareness Month

[Whio Awareness Month](#) promotes awareness of this iconic duck.

World Wildlife Day



Photo: Supplied / Science Of The Total Environment / Shawn Miller

Hermit crabs are 'wearing' our plastic rubbish

Hermit crabs all over the world, which scavenge shells as armour for their bodies, are turning increasingly to plastic waste instead. The conclusion is based on analysis of photos, taken by wildlife enthusiasts, and published online.

Scientists said they were "heartbroken" to see the extent to which the animals were living in our rubbish. They said two-thirds of hermit crabs species were pictured in "artificial shells" - items that humans discarded.

The discovery is published in the journal [Science of the Total Environment](#).

That is all from me this month – hope to see you at our monthly meeting or on the zoom call next week.

Kind Regards

Anthea

Anthea McClelland

Chair

Forest and Bird Manawātū Branch

Manawatu.Branch@forestandbird.org.nz



Copyright © 2024 Forest and Bird Manawatu Branch, All rights reserved.

Want to change how you receive these emails?
You can [update your preferences](#) or [unsubscribe from this list](#).

